

L(

)S

Isolario

Landfalls Open call 2026

Artist residencies at Le(Serre
Campoformido, Udine, Italy

Contents

3	Isolario
5	Edition 2026, Landfalls
6	The host organisation: Le(Serre)
7	Objectives of the collaboration
8	Installation location
9	Dimensions, materials and installation specifications
10	Profile required
11	Practical details
12	Support
13	Documents and application procedure
14	Selection criteria
15	The Curators
16	Site Images and Maps

Isolario is a residency programme inviting artists from different disciplines and backgrounds to reflect on the landscapes of peripheral and provincial territories, conceived as an archipelago of presences, traces and apparitions.

Traditionally, the isolario is a form of narrative about a place that combines real cartographic and geographical elements with historical, literary or mythological accounts. It is not merely a matter of representation, but also of narration and imagination.

For this reason, it can also be considered a sort of 'sentimental atlas', a guide to discovering real or imaginary places. In this context, the isolario becomes a tool for interpreting the contemporary territory as a constellation of fragments: residual areas, spontaneous ecosystems, uncultivated and interstitial spaces that emerge on the margins of the built environment.

In an environment suspended between abandonment and intervention, between spontaneous growth and human intervention, artists are invited to develop projects that explore these unstable geographies, engaging forms of life, temporalities and imaginative possibilities that inhabit these landscapes of the present and the future.

The project takes place in a field of approximately 3,500 square metres that has remained uncultivated until now. Over the years, spontaneous vegetation has developed, blending seamlessly with the adjacent riparian environment of the Cormor stream, consisting of groups of tall trees (black locusts, acacias, poplars, hazel), shrubs, brambles and grasses typical of uncultivated meadows, such as grasses and legumes.

Over the years, this land has been the site of repeated incidents of illegal dumping, and has recently been reclaimed and returned to public use. Through small-scale mowing and sowing operations, the aim has been to foster a sense of delicacy and semi-permanence, in harmony with the characteristics of the rural landscape in which the site is situated and the riparian ecosystem of the adjacent watercourse.

As with Gilles Clément's *The Third Landscape*, this is a site previously controlled and shaped by humans but subsequently abandoned, where the development of new animal and plant biodiversity is possible, shaped by the new characteristics this environment has taken on.

From a landscape perspective, it takes the form of a fragment of the agricultural landscape that characterises the entire outskirts of Udine, situated within a craft and post-industrial context (Cariere Romanello) that has gradually changed and been re-inhabited over the years.

In the peri-urban sea of fields and detached houses on the outskirts of Udine, we are in a small 'archipelago' of industrial and craft buildings where diverse entities coexist, such as a cultural and co-working centre, a Ghanaian evangelical church, a mechanic, a construction firm and other small craft businesses.

A landfall is a site of temporary arrival, of passage and of pause. It is a space of contact between different bodies, landscapes and trajectories: a point where one stops to build relationships or sets off again in other directions.

For this edition, Isolario invites us to reflect on the idea of the landfall as a fragile and transitory condition, linked as much to human movements as to ecological and territorial transformations. To land means to enter into a relationship with otherness, to access a context without necessarily belonging to it, to inhabit it temporarily, to allow oneself to be shaped by its presence.

Within the context of Le(Serre, the theme echoes the very nature of the place: a residual and marginal space recently returned to collective use, traversed by different flows, presences and communities. The park thus becomes a territory of coexistence and sedimentation, an environment in which spontaneous and constructed elements coexist in an unstable equilibrium.

The proposed residency is an invitation to develop installation projects that explore the concept of 'landfall' in its environmental, symbolic and narrative dimensions: temporary shelters, navigational aids, meeting places, traces of passage, imaginary habitats, signals, presences, or forms of coexistence between humans and non-humans.

The hosting organisation: Le(Serre)

Le(Serre is a cultural production centre and a space for networking, collaboration and experimentation located in Campoformido, on the outskirts of Udine. It hosts artist residencies, training courses, exhibitions, workshops and productions related to multimedia arts, local research and collaborative practices.

<https://leserre.co/>

Objectives of the collaboration

The residency aims to create a temporary installation for the outdoor space of Le(Serre park, developed through a process of artistic research in dialogue with the site's environmental, social and landscape context. Applicants are required to work in relation to the local context, through practices of listening, observation and interaction with the area and its inhabitants.

Installation location

The installations will be set up within the outdoor park at Le(Serre, a green space of approximately 3,500 square metres located in Campoformido (UD), near the Cormor stream.

The park is a constantly evolving environment, created from previously uncultivated land that has been gradually reclaimed and developed, where the following coexist:

- spontaneous vegetation (tall trees, shrubs, uncultivated meadows);
- open areas designated for community activities;
- an ecosystem in balance between human intervention and natural dynamics.

The park is conceived as an intermediate space between the man-made environment and spontaneous nature: a fragile, evolving context that accommodates forms of biodiversity and uses that are not yet fully defined.

The works will be placed within this environment as temporary installations, capable of engaging with the landscape without imposing themselves, helping to redefine its perception and use.

Adjacent to the park is the Le(Serre space, a multifunctional cultural centre housing a co-working space, exhibition areas, a small study, a kitchenette, toilets and a storage area for technical materials. Here, the artist may use the spaces, materials and equipment, in agreement with the organising body.

Dimensions, materials and installation specifications

- There are no predefined restrictions regarding dimensions and materials;
- Projects must be compatible with the context and the characteristics of the site;
- The application document must specify the dimensions, materials and installation methods;
- There are no electrical points in the park, so it is not possible to connect the installation to the mains supply;
- The appendix contains some images and a dimensioned plan of the park. Please specify the envisaged location for the installation.

Profile required

The call is open to:

- artists from diverse backgrounds and disciplines, whose work takes the form of installation art;
- artistic disciplines: visual and multimedia arts, sculptural and installation practices, public and relational art, interdisciplinary practices related to landscape and outdoor space;
- individuals interested in a transdisciplinary and experimental approach;
- practices focused on dialogue with the landscape and the social context;
- people with an aptitude for listening, observation and building relationships;
- artists willing to participate in a one-week residency in contact with the local community and other artists.

Practical details

- Duration of the residency: one week (Sunday to Sunday)

- Venue: Le(Serre, Campoformido (UD) – outdoor park

- Available dates:

27/09/2026 – 03/10/2026 (public presentation: 03/10/2026)

18/10/2026 – 25/10/2026 (public presentation: 24/10/2026)

Applicants are required to indicate their preferred period. It will, however, be possible to view the location and carry out site visits throughout the period prior to the residencies, subject to agreement with the organisers.

- Accommodation and meals: the organisation covers food expenses up to a maximum of €400 and accommodation expenses up to a maximum of €400. Expenses may be paid in advance by the artist and subsequently reimbursed. Upon request, the organisers can suggest or book and pay for suitable accommodation directly.

- Transport: the organisers cover transport costs up to a maximum of €400. Expenses may be paid in advance by the artist and subsequently reimbursed or managed directly by the organisers through the advance purchase of tickets.

Support

Residency grant: 1200€ gross

In addition to this amount:

- accommodation costs: covered by the organisation up to a maximum of €400
- meal expenses: covered by the organisation up to a maximum of €400
- travel expenses: covered by the organisation up to a maximum of €400
- materials costs: covered by the organisation up to a maximum of €1000

The residency also includes:

- curatorial support provided by Giovanni Chiarot and Matteo Carli;
- support for mediation and communication;
- access to tools, materials and equipment available at Le(Serre (where possible and subject to agreement).

Documents and application procedure

To apply, please send an email to info@leserre.co with the subject line “Call for artistic participation – Le(Serre)” containing the following attachments:

- A description of the project to be developed during the residency. This document may be in any format and may include text, images, drawings, audio or video files;
- A portfolio of recent work in PDF format;
- An up-to-date curriculum vitae in PDF format;
- In your application, please indicate your preferred period (to be chosen from either 27 September 2026 to 3 October 2026 or 18 October 2026 to 25 October 2026).

Deadline for applications: 20 June 2026, 23:59

Publication of results: 25 June 2026, 23:59

Selection criteria

Applications will be assessed based on:

- the artistic quality of the research;
- alignment with the theme of the call;
- the relationship with the landscape and local context;
- the technical and financial feasibility of the project;
- the originality of the proposed approach.

The Curators

Matteo Carli

Architect, cultural designer and independent curator.

Following his studies at the IUAV in Venice and a period of research and collaboration with collectives such as Stalker/Osservatorio Nomade and Raumlabor Berlin, he has developed his practice across public art, temporary installations, territorial storytelling, and processes of urban and social regeneration.

In recent years, he has curated and developed artistic and residential projects in peripheral and marginal contexts, working on the relationship between landscape, community and territorial imagination. He is one of the founders and curators of projects such as Altrememorie, Microfestival, Walk the Line and Le(Serre), platforms through which he develops interdisciplinary practices of research, cultural production and the activation of public space.

His work spans design, production and curation, through projects that interweave installations, participatory practices and exploration of the territory.

Giovanni Chiarot

Photographer and filmmaker. He studied photography at the European Institute of Design and subsequently explored the documentary form by attending a film directing course with Andrea Segre. In 2024–2025, he was selected for the authorial photography programme curated by Nausicaa Giulia Bianchi.

His work focuses primarily on the relationship between human beings, urban space and new technologies, with a particular emphasis on large-format photography.

He has documented numerous national and international festivals and events. Since 2013, he has also been involved in stage photography, working with CSS Teatro Stabile di Innovazione del Friuli Venezia Giulia and ArtistiAssociati Centro di Produzione Teatrale; his photos have been published in publications such as Il Manifesto, Huffington Post, Doppiozero, Teatro e Critica, etc.

As a filmmaker, he has produced several works both individually and as part of a collective; his documentaries have been selected for various festivals, including ViaEmiliaDocFest, Festival de Cinema de Girona, Trento Film Festival and Bansko Mountain Film Festival.



Aerial view of the site



Aerial view of the site

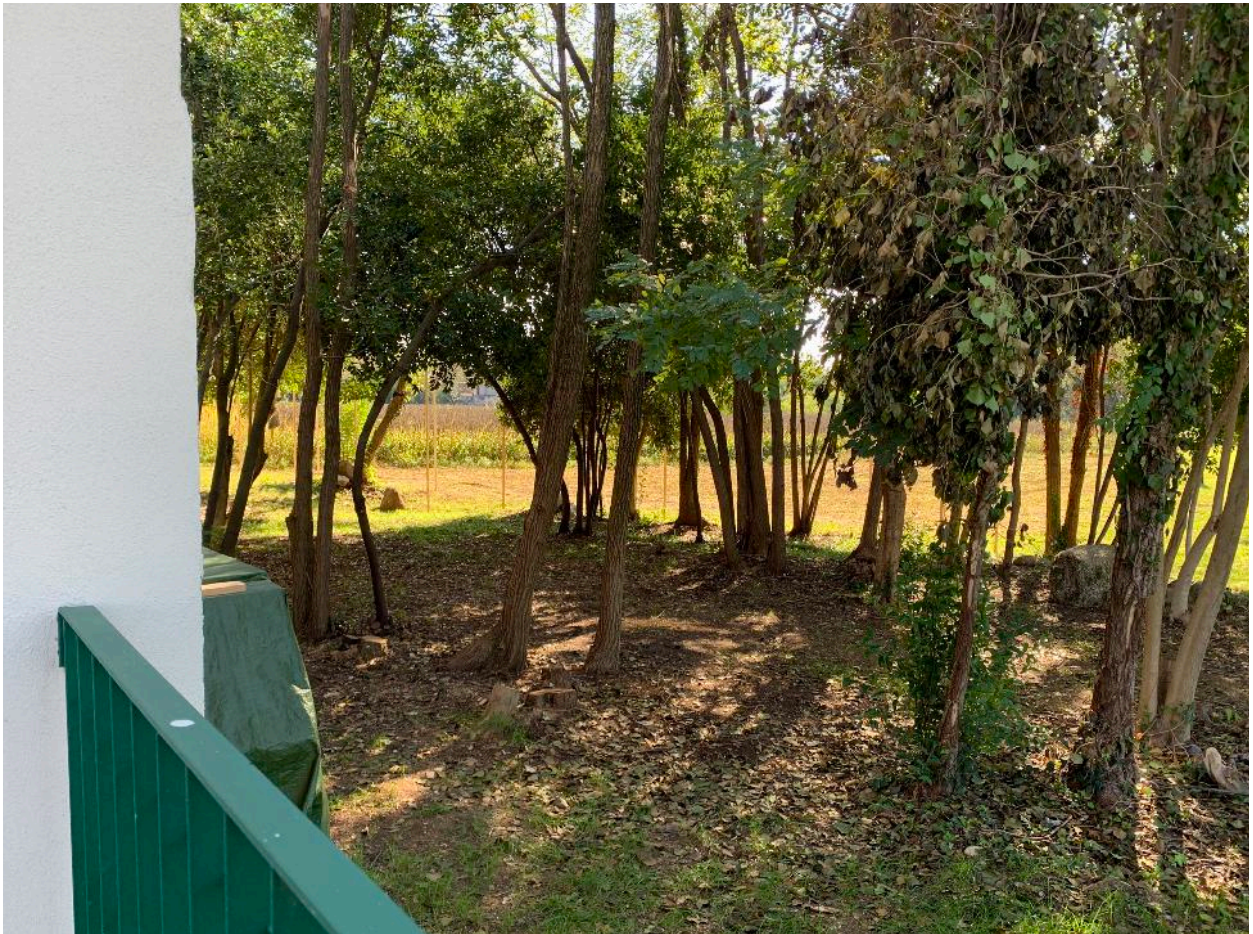


Aerial view of the site



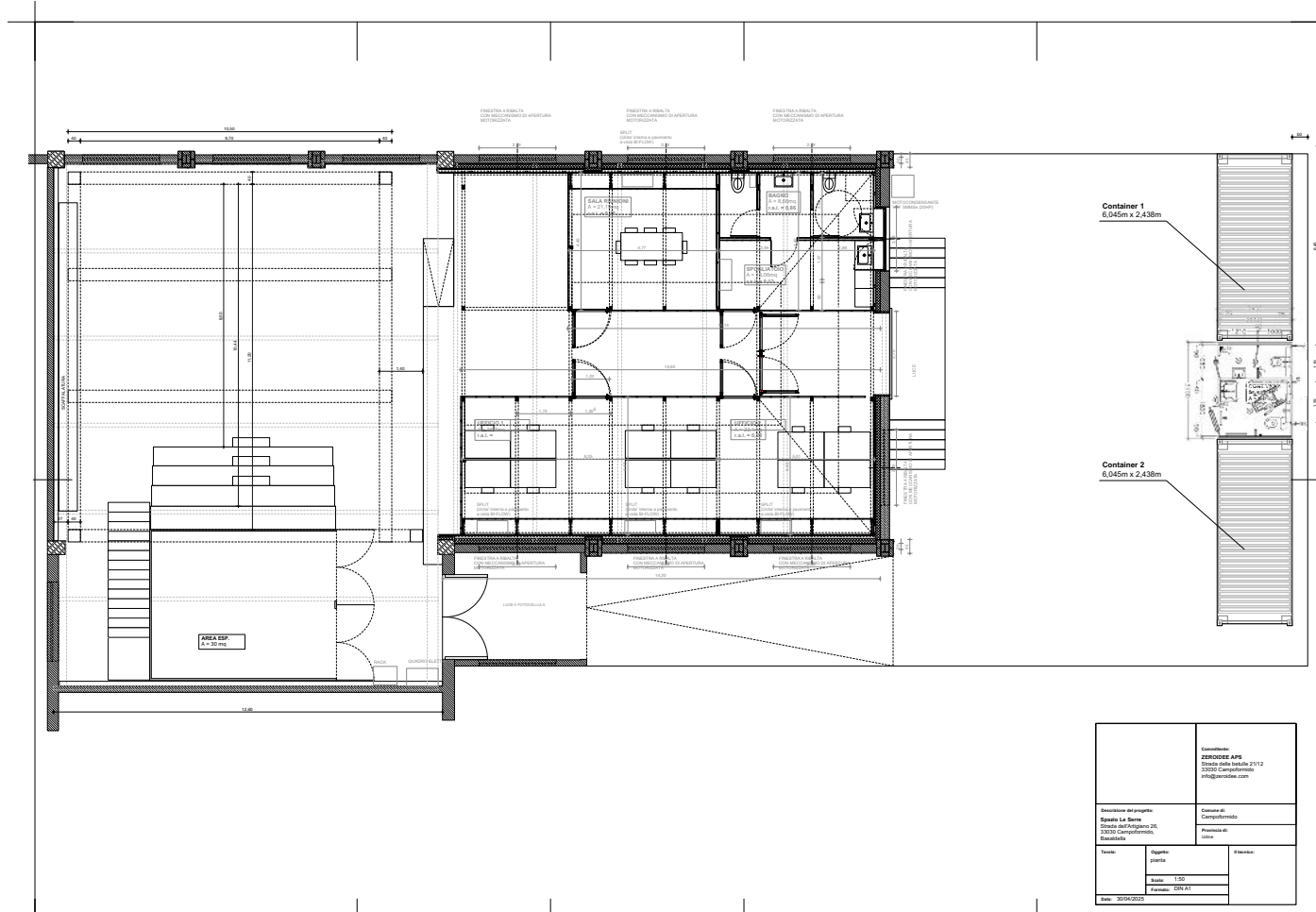
The Outdoor Area and the Le(Serre Cultural Center







Site Plan



Le(Serre Floor Plan

Coordinatore: ARCHITETTO APS Studio della Serre 2012 33030 Casierolmura info@casierolmura.com	
Direzione del progetto: Studio La Serre Studio del Freggiano 16, 33030 Casierolmura, Treviso	Comune di: Casierolmura Provincia di: Treviso
Titolo: Opere: Stato: Fase: Data: 2024-02-22	Autore: Disegnato: Formato: Data:

Isolario

Artist residencies at Le(Serre

Open call 2026 – Landfalls

Organized by

LE(SERRE L(zeroidee)S

With the support of



REGIONE AUTONOMA
FRIULI VENEZIA GIULIA

IO SONO
FRIULI
VENEZIA
GIULIA



FONDAZIONE
FRIULI